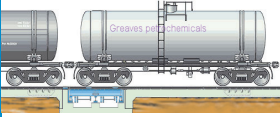
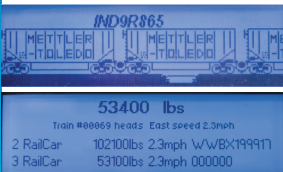


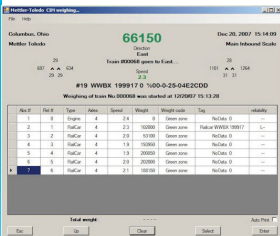
Rail Scale Controller Terminal for dynamic/in-motion weighing



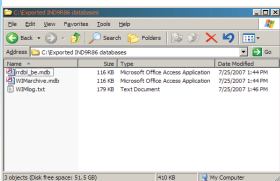
Weighing in motion
with train speeds up to 10 kph (6 mph),
for increased productivity and throughput.
Automatic detection of locomotives and car
types assure efficient unattended operation.



Graphical LCD display
shows weighing data for each car and
summary information once train weighing
is complete. Also provides operator access
to reporting and setup functions.



**Local or remote PC LCD
Display interface**
for comprehensive access to train weighing
data, setup functions and current system
status. Last train data displayed, including
speed and direction.



**Powerful data storage and
communication**
provides the ability to store hundreds of
train reports in common database formats,
allowing for simple export via Ethernet, fiber
optic, modem or wireless connection.



IND9R86 Controller

The IND9R86 rail scale controller is used to weigh rail cars as they cross a scale at speeds up to 10 kilometers per hour. The controller automatically detects individual railcars as they cross the scale and provides transaction reports of both individual railcars and the entire train. Interface to inductive wheel detectors and Automatic Equipment Identification readers is provided. Compared to traditional static weighing, benefits include enhanced productivity, increased safety and fully unattended operation.

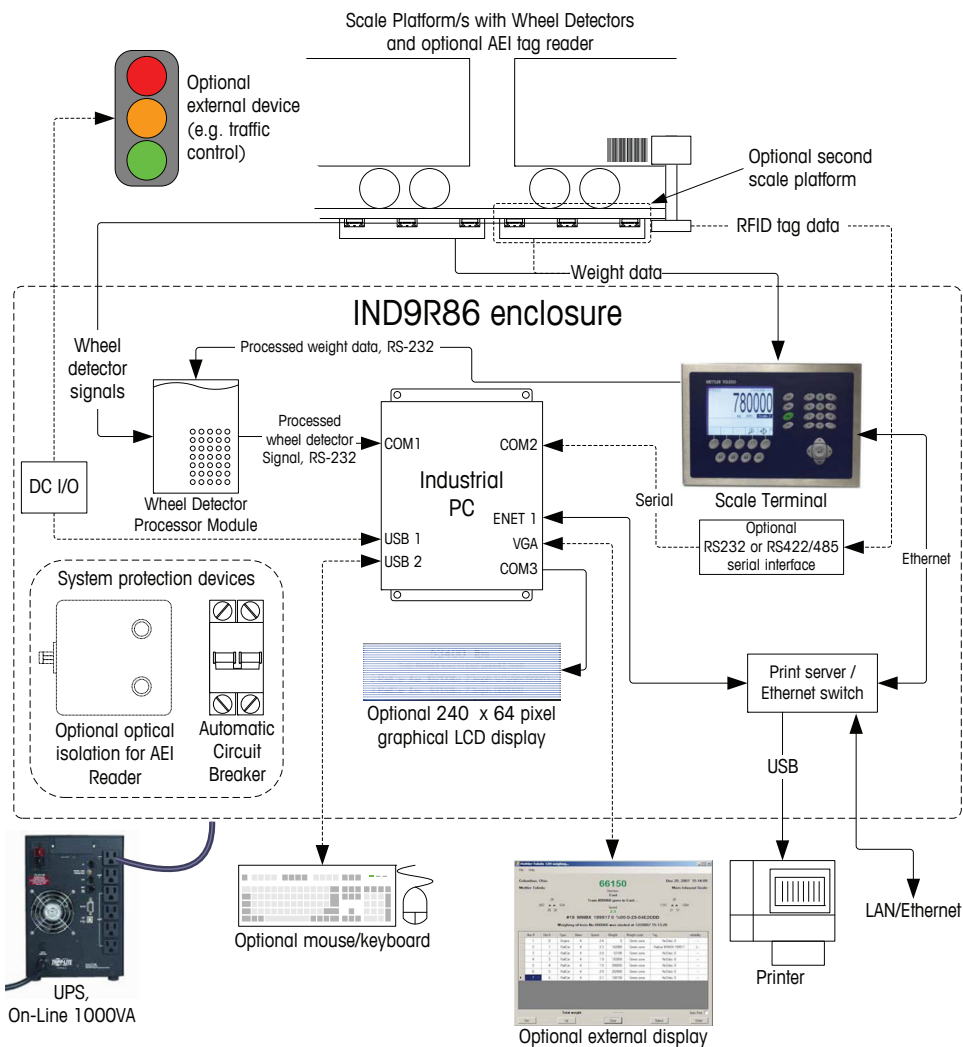
Technical data

IND9R86

Rail Scale Controller Terminal for Dynamic/in-motion weighing

Features and benefits

- Weighing at speeds up to 10 kph/6 mph while rail-road cars are coupled provides increased productivity and throughput
- Unattended or attended operation gives maximum user flexibility and personnel productivity
- Controller can interface to multiple platforms for in-motion or static weighing; this allows for simultaneous in-motion weighing of liquids using two platforms, as well as static weighing via one or two platforms
- Rollback detection and recovery allows for weighing in load-out applications where train may reverse direction
- Interface to AEI equipment allows for automatic entry of railcar ID data into weighing record, and net weight calculation
- Non-metric or metric configuration allows for use of units most acceptable at end use location
- Expanded diagnostics make troubleshooting fast and easy, allowing for corrective action before problems occur
- Easily-generated reports



Enclosure dimensions (L x W x D)	61 x 46 x 31 cm (24 x 18 x 12 in.)
Shipping weight	21 kg (46 lb)
Enclosure construction/ environmental protection	Stainless steel wall-mount, protected to IP54 standard
Display	Monochrome 240 x 64 backlit LCD display. Optional connection to VGA monitor
Power	115 VAC or 230 VAC, 49-61 Hz
Scale types	Analog, POWERCELL®.MTX®
Weighing terminals	Mettler Toledo IND135 or IND780
Number of scales	Up to 2 platforms, intended for use with 7260CIM scale
External function keys	5 operator menu function keys
Standard peripheral equipment interface	Railcar wheel detectors, host PC, printer
Optional peripheral equipment interface	AEI reader, speed warning signal lights
Memory/Processor	512MB SDRAM, Pentium-class processor
External keyboard	Supports optional external USB keyboard
Communications	2 RS-232 serial ports, 4 USB 2.0, TCP/IP 10Base-T Ethernet
Options	Up to 8 wheel detectors, PLC interface, fiber optic converters, wireless Ethernet, dial-in Ethernet router, 1000VA on-line UPS
Operating environment	-10°C to 40°C (14°F to 104°F), 10% to 95% relative humidity, non-condensing
Agency approvals	NTEP COC 06-061 A2, UL (pending), OIML (pending)



Quality certificate ISO9001
 Environment certificate ISO14001
 Internet: <http://www.mt.com>
 Worldwide service

INDB0040.1E
 Subject to technical changes
 ©04/2008 Mettler-Toledo, Inc.

ServiceXXL

Tailored Services

Essential Services for Dependable Performance

METTLER TOLEDO is uniquely qualified to provide the installation, calibration and maintenance services essential to ensuring accuracy, optimizing uptime and prolonging equipment life. Our service representatives will be there at the right time, with the right parts, the right tools and the right skills to meet your needs.

www.mt.com

For more information