

SQC



SQC-XP

Statistical Quality Control

For monitoring, controlling and optimising filling processes to comply with economic and legal requirements in these industries:

- Pharma
- Cosmetics
- Food
- Chemistry



Filling processes
Transparency at a glance

METTLER TOLEDO



Cosmetics

Most cosmetics contain extremely valuable substances. With the help of SQC-XP, you can reduce the fill quantity to the legally required minimum and verify that your cosmetics comply with the required fill quantities and their tolerances.



Food

Food manufacturers have to meet an array of regulatory requirements. SQC-XP is your tool for relieving the burden of collecting and evaluating production data. With SQC-XP you always know your production mean value and the size of the scatter of the fill quantities. The trend display shows you the direction of movement of your fill quantities.

e-Mark, IFS, German Prepackaging Ordinance (FPVO)



An SQC-XP can manage up to 100 articles.

Chemicals

End customers also expect to receive precisely the indicated quantity from countless other products. Numerous containers are filled and supplied to secondary industries as semi-finished products.



SQC-XP – Excellent balance between legal compliance and filling costs

- Transforms an Excellence Plus XP balance into a quality control system
- Comfortable operation with touch screen
- Standalone system, SQC application in the balance
- Display increments beginning with 1 µg, weighing range up to 64kg

European Pharmacopeia and German Prepackaging Ordinance

As a filler of prepackaged goods, you cannot underfill but also don't want to give anything away. Uniformity is the law! SQC-XP is a tool that gives you optimal support for compliance and GMP.

Comfortable operation

All important information is displayed on the large touch screen. Make your entries by directly touching the display: Start a random sample, configure the system, adjust an article, define a new article or print a report.

The right balance for every package

The wide variety of Excellence Plus XP balances means you'll find the right balance for your product. The selection ranges from analytical balances with a resolution of 1 µg, to precision balances with a weighing range of 64kg.



Pharma

SQC-XP offers filling process control for the weight uniformity of tablets, capsules, powders and suppositories in accordance with the European Pharmacopoeia.

GMP, GLP, European Pharmacopoeia

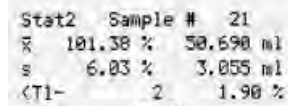
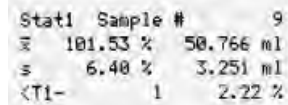
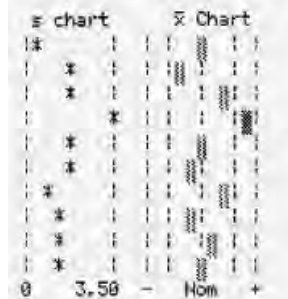
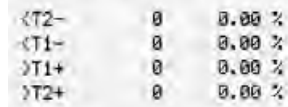
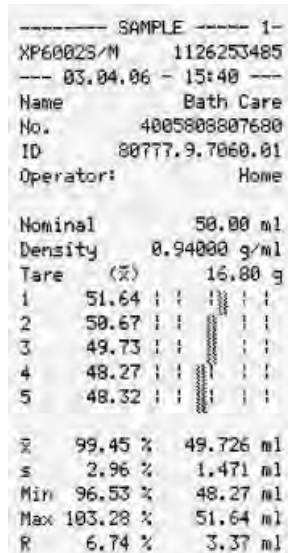
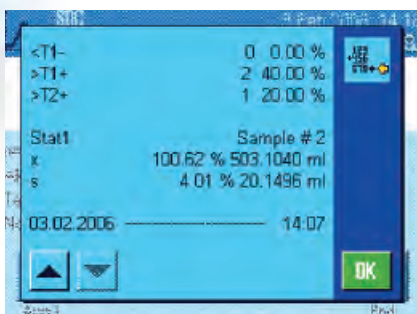
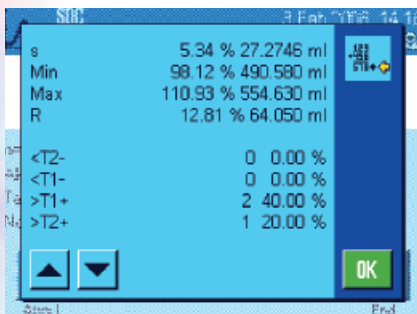
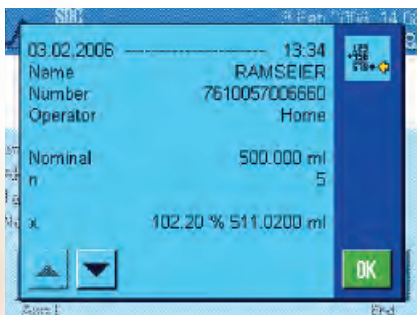
The LV11 automatically feeds tablets and capsules to the weighing pan.

Process monitoring and documentation

Random samples

Random sample results are clearly shown on the large display and automatically printed on a strip or A4/legal printer.

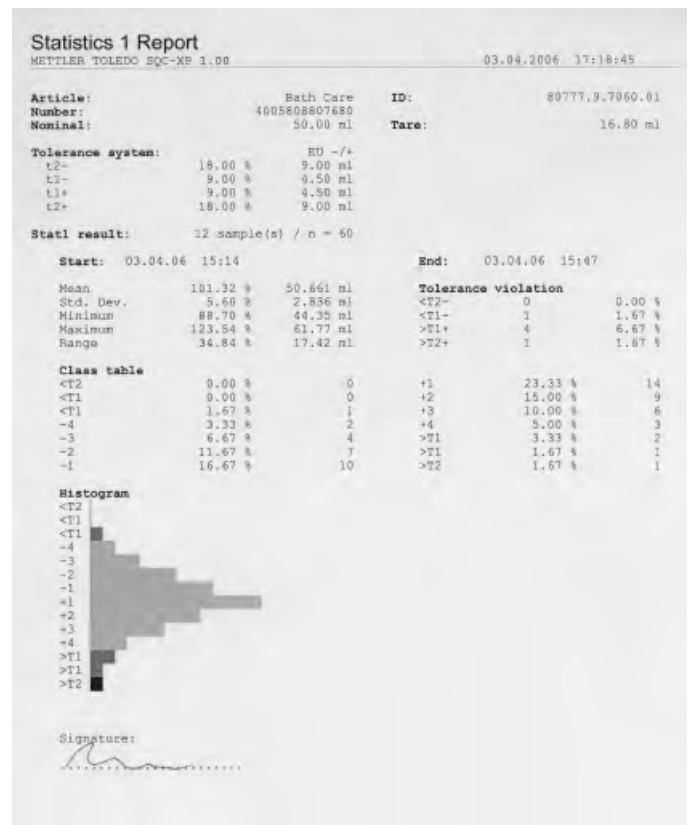
Use the mean value, scatter and trend to determine whether you need to adjust the fill quantity.



15:41
COSMETICS CORP.

Statistics

SQC-XP provides short- and long-term statistics per batch. Batch and statistics reports can be printed on a strip printer or A4 printer.



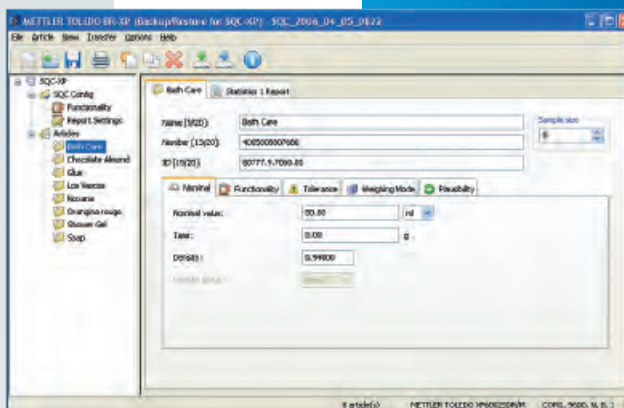
The pre-configured printouts conform to GxP and can be adapted to the needs of the customer.

Backup/restore software (BR-XP)

The BR-XP PC program included in your package allows you an improved overview of your article configuration. You configure the articles on the PC and load them in the balance. In less than no time the balance is ready for a random sample.

Article data that you modified on the balance is loaded to the PC and can be stored as backup.

You can view the saved statistics on the PC and print them out on your PC printer. If the SQC-XP's 100-article memory should prove insufficient, simply use BR-XP to prepare another file, which will allow you another 100 articles.



Options/accessories:

Data cable:

To connect the SQC-XP balance and backup/restore PC program

11101051

Interfaces for the optional bay:

- RS232 option 11132500
- LC option (LocalCan) 11132505
- BTS option (Bluetooth single point) 11132535
- BT option (Bluetooth multi point) 11132530
- PS/2 option 11132520

Peripherals supported:

- RS-P42 strip printer (RS232),
BT-P42 strip printer (BTS/BT)
LC-P43 strip printer (LC),
Epson LX300 A4/Legal printer (RS232)
- LV11 tablet feeder (RS232, LC)
- LC-I/O Process interface for actuating visual or acoustic signals (RS232, LC)
- Barcode reader (RS232, BT, PS/2)
- PC with backup/restore (RS232/BT)

If you are planning to use 3 or more peripheral devices with the SQC-XP, you will need either the LocalCan or the BT option.

Draft shield doors for LV11 operation:

- Doors with slot for XP analytical balances 11106715
- Doors with slot for XP precision balances with high draft protection 111327111

www.mt.com

For more information

Mettler-Toledo AG

PO Box VI-400, CH-8606 Greifensee
Tel. +41-44-944 22 11, Fax +41-44-944 31 70

Subject to technical changes
© 09/07 Mettler-Toledo AG
Printed in Switzerland 21901293

SQC-XP product features

- SQC application for installation on XP precision/analytical balances
- Operated and configured through the clearly laid out touch screen
- Languages: German, English, French, Italian, Spanish

Number of articles: – 100, with up to 25 parameters each

Tolerance systems: – EU, e.g. for food
– European Pharmacopeia
– 3 free tolerance systems
– Separate mean-value tolerance (TM)

Units: – mg, g, kg, oz, lb, ml, l, fz, customer standard

Random samples: – Mean value tare (preset packaging weight, scatter neglected)
– Tare series (for determining the tare with small mean variations in packaging weights)
– Single tare (individual recording of the tare with large mean variations in packaging weights through preweighing/differential weighing)
– Additive and subtractive weighing
– Automatic feeding with LV1 1

Statistics: – 1 batch-based article, code-controlled
– 2 time-based per article; periods freely selectable

Reports: – Random sample printouts, statistical printouts
– Standard: mean, standard deviation, number of individual values
– Configurable:

- 2 headers and 3 footers with free text, time/date, balance identification
- Tolerances in the statistical report (pharma: in the statistical and random sample reports)
- Single values on the random sample report
- Largest single value, smallest single value, difference of both values
- Overfilling and underfilling violations (in tabular form)
- Violation monitoring messages (in large print)
- Histogram, class table
- Graphic representation of the last 10 mean values and standard deviations
- Simple statistical information (only on the random sample report)

Safety: 8 different user profiles, the same as all XP applications, access authorizations configurable

Interfaces: The SQC-XP application supports the following interfaces:
RS232, LC (LocalCan), BTS (Bluetooth single point),
BT (Bluetooth Multi Point), PS/2

Backup/Restore PC program: – Configuration of article data on the PC
– Management of an unlimited number of articles (100 per safety data)
– SQC-XP data backup on the PC (backup)
– Restoration of backup data from the PC to the balance (Restore)
– View and print statistics on the PC
– Minimal hardware requirements: Windows XP or 2000, Pentium II/64MB RAM

Standard equipment: – Contained in the CD:

- SQC-XP application (firmware)
- BR-XP backup/restore program
- SQC-XP training presentation
- Operating instructions

– Registration sheet, Quick Guide

Balance specifications: You can obtain detailed information on XP precision and analytical balances from individual product datasheets or brochures provided by your METTLER TOLEDO sales representative.

